

LAKEMBA LINK

Term 1 – Weeks 3 and 4



Alice Street South, Wiley Park 2195

P: 02 9759 2915 E: lakemba-p.school@det.nsw.edu.au

Dear Parents and Carers,

Thank you for supporting our community to have a successful start to 2022. On Monday our students met their new teacher and classmates when they went in to their 2022 classes. Each child's strengths, needs, wellbeing and friendships are considered by teachers who spend a lot of time making sure every student is placed in the best learning environment for them.

Teachers spend a lot of time making sure that they use all the information they have about each child's strengths, needs, wellbeing and friendships to create classes.

Our 2022 classes are named after native Australian animals. For a number of years each classroom at Lakemba has had an animal and plant totem. Many of the classroom plant totems are planted in the Tumbeelluwa, our Bush Tucker garden. This year we will be adding animal sculptures around the school to represent the class totems. You will find a list of the classes and their teachers further in this newsletter.

Happy New Lunar Year to our families who have been celebrating over the last couple of weeks.

The next newsletter will be published in Week 6.

Kind regards,
Jann Price

Meet the Teacher

Parents and carers are their child's first teacher and it is important that we work together to support our students to achieve the best possible outcomes in their learning. One of the ways we do this is to invite parents to *Meet the Teacher* meetings at the beginning of the year. At this meeting you will learn about our school as well as the expectations and routines that your children are involved in. The *Meet the Teacher* meeting is an information session. It is not a time to get involved in conversations about individual children. If you wish to speak to your child's teacher about you child please call the office to make an appointment.

Because of the current COVID restrictions our *Meet the Teacher* meetings will be held via Zoom. They are scheduled for 3.30pm on the dates below:

Early Stage 1 – Tuesday 1st March

Stage 1 – Thursday 17th February

Stage 2 – Tuesday 22nd February

Stage 3 – Thursday 24th February

The links for the Zoom meetings will be sent home closer to the time.

Important Dates

Thursday 3 rd February	First day for Kindergarten 2022 students
Thursday 17 th February	Stage 1 Meet the Teacher (Zoom)
Tuesday 22 nd February	Stage 2 Meet the Teacher (Zoom)
Thursday 24 th February	Stage 3 Meet the Teacher (Zoom)
Monday 28 th February	Applying for High School in 2023 – Parent / Student Meeting (Zoom)
Tuesday 1 st March	Early Stage 1 Meet the Teacher (Zoom)
Friday 18 th March	HIGH SCHOOL FORMS due to Lakemba Public School
Thursday 24 th March	School Photos
Friday 8 th April	Last Day of Term 1
Wednesday 27 th April	First Day of Term 2 for Students

What's New at Lakemba?

We finally have our new COLA (Covered Outdoor Learning Area) which is much larger than our old one. We can't wait to be able to have assemblies under it because, unlike our old COLA, we are sure that all students will be able to fit now.

During the holidays the playground outside the office (the Square) and under the new COLA was resurfaced.

The Bush Tucker Garden sign (Tumbeelluwa) and the information about each of the classroom's plant totem have been installed. We will officially name the garden in a small ceremony in the next few weeks.

Students have also noticed a lot of other signage around the school. The signage is our Positive Behaviour 4 Learning (PB4L) expectations. All learning areas, wet areas, the office and the playground has new signage. All the signage includes a new character at our school. Stay tuned to find out who that character is.



Student Leaders 2022



Congratulations to our 2022 Senior Student Leaders - Jahin, Leura, Mahira, Lailah, Hafsah and Jiyad.

Staffing

Staffing and the number of staff in NSW Government schools is determined by the Department of Education. The number of teachers in a school is determined by the number of students who are enrolled in the school. Over the last two terms a number of families have moved, another group have enrolled their children in private schools and a number of families have moved interstate. As a result the total number of students at our school has reduced significantly.

At the end of last year the Department of Education announced a new role in Primary Schools – Assistant Principal, Curriculum and Instruction (AP, C&I). This role was filled through the merit selection process. Congratulation to Ms Edwards who was successful in the selection process. Ms Edwards role is to support strong instructional leadership models, coordinate professional learning for teachers, monitor student outcomes and support families to be key partners in student learning. She does not have her own class but works in classrooms across the school.

We are also delighted to inform our community that Ms Vavitsas has been appointed as a permanent teacher to our school. She has been working as a temporary teacher at Lakemba Public School for the last thirteen years,

RAT Kits

Students who returned their permission note have received their RAT kits for Weeks 4 and 5 (this week and the next week). Testing twice a week before coming to school on Mondays and Wednesdays is recommended but not mandatory. Any positive cases must be reported to the school and to NSW Health via the Service NSW App.

Even if students have a negative RAT result but have flu like symptoms such as a fever, runny nose, cough, sore throat, headache and general aches and pains they should stay at home until their symptoms have reduced.

At the time of writing the school understands that no more RAT kits will be distributed to students.

High School 2023

Very soon our Year 6 students will be bringing home a High School enrolment form that will need to be completed and returned to us before the end of March.

High Schools usually organise times for prospective parents to visit the school, have a look around and answer any questions that parents might have. If you are considering enrolling your child in a particular High School we suggest that you contact the High School and ask them about these times.

On Monday 28th February Mrs Mangraviti will be hosting a Zoom information session for parents and students about how to complete the High School form. At this meeting parents will be able to ask questions about High School.

It is important to note that many High Schools have a limited number of places for out of area enrolments – that is students and families who do not live in the school intake area. You can find your local High School using this link <https://schoolfinder.education.nsw.gov.au/>

ATTENDANCE is Important!

All students must be at school by 8.55am every day.

The only reason students should not come to school is if they are sick. Tiredness or sleeping in are unjustified absences.

Absences for dental or medical appointments must be supported with a doctor's certificate.

All students who are absent from school MUST bring a note explaining their absence on the day they return to school.

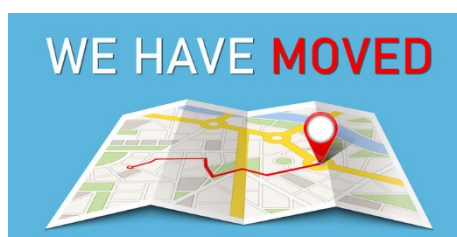
A child who is ten minutes late twice a week misses more than three hours of school per term!

Absence Notes

Thank you to our families who make sure they send a note explaining their child's absence from school. All students who have been absent from school must bring a note from their parent or carer explaining their absence on the day their return to school. Students who do not bring a note with them remain in the office area until a note explaining their absence is provided by their parent or carer. If you forget to send the note with your child you can email it to the school on lakemba-p.school@det.nsw.edu.au.

Have You Moved or Changed Your Phone Number?

Please return your family's student detail updates as soon as possible. If you are unable to find the green form please ask your child to get another one from the office.



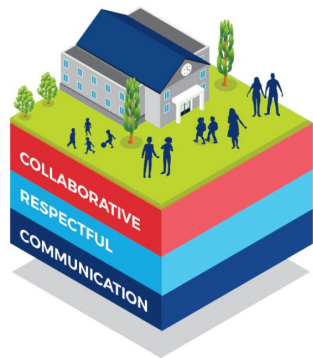
You must let us know!

Emergency Contacts

Please make sure that you have checked that the Emergency Contact information you provided when your child enrolled at Lakemba is still current. When children are sick we must be able to contact you or your emergency contacts quickly.

School Community Charter

In 2020 the Department of Education, in conjunction with a variety of stakeholders, developed the School Community Charter. This document outlines the responsibilities of parents, carers, educators and school staff in NSW public schools to ensure our learning environments are collaborative, supportive and cohesive.



We all play a part

The best education happens when parents and schools work together

The full School Community Charter is included in this newsletter.

Voluntary School Contribution

This week you will receive a note about the annual voluntary school contribution. Every year we ask families to make a small contribution to assist us to provide resources for your children. As we have done for the last three years we are asking parents to contribute:

- \$35 per student or
- \$70 per family.

Your contribution will be used to purchase resources to enable your children to have access to items to help them in their learning. This year we will use the contributions to increase our Take Home and Guided Reading resources.

Crossing the Road Safely

At the end of last year Canterbury Bankstown Council upgraded the pedestrian crossing outside the school on Alice Street. It is extremely concerning that some parents are choosing not to use the crossing with their children.



Please set a good example for your children and use the Pedestrian Crossing even it if means it may take you a little longer. Be Safe! Teach your children to follow the rules even though they may be inconvenient.

Mobile Devices and Online Services Procedures at Lakemba Public School

At the beginning of 2020 the Department of Education introduced a policy relating to mobile devices and online services in primary Schools. Lakemba Public School has developed procedures that align with the NSW Department of Education Mobile Devices and Online Services Policy.

At Lakemba Public School students must sign their mobile phones and smart watches in to the office before 9am each morning. The phones and sign in book are placed in the secure strong room during the day. Students must come to the office after they are dismissed from class and sign their mobile phone out. Students who have their mobile phones on their person or in their bag during the day will have the phone taken from them and placed with the other devices in the secure room. Parents will be contacted to come to the school to retrieve the phone.

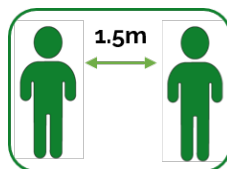
These procedures include the use of mobile devices while involved in school related activities such as excursions.

The Principal is the only person who can grant an exemption to these procedures.

Health and Safety Precautions

Current COVID guidelines issued by the Department of Education in conjunction with the Department of Health means that parents must sign in and out of the school when they come onto school grounds.

It is important that we continue to follow all health and safety recommendations to ensure that we all remain as well as possible. This means that anyone who is feeling unwell must not come onto school grounds. It also means that everyone must maintain a social distance of 1.5 metres when they are onsite.



It is important for parents to maintain social distance while they are dropping off or picking up their children.

School Uniform

Our students have begun the new school year looking beautiful in their uniforms. A reminder that shoes should be basically black and that hijabs should be white or royal blue. Hijabs should also be close fitting and not flowing as they can be dangerous on the playground when the students are playing.

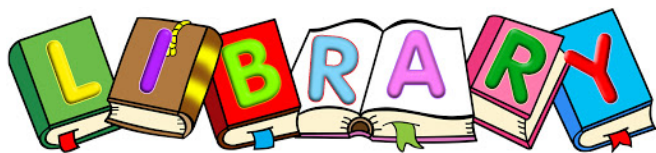
All items of student clothing must be labelled with the student's name so they can be returned if they are misplaced.

The school has a small number of clean, used jackets and jumpers of various sizes. Please see the office if you require a jacket or jumper.



Follow us on Twitter

@Lakemba PS



Welcome to the first Library news for 2022.

Due to Covid restrictions physical borrowing of books from the library cannot happen this term. However, students can still borrow e books from our school's library or listen to someone read.

To help our students continue reading Lakemba Public School has a subscription for two resources– **Story Box Library & Oliver eBooks**.

How to access Story Box library.

- 1) Visit www.storyboxlibrary.com.au
- 2) Choose Log In from the top right corner of the screen.
- 3) Log in using the username and password provided below.
- 4) Enjoy the library of stories on any device with Internet connection

Username: LakembaPS

Password: lps

How to borrow and read an eBook on Orbit

Our school's online library

- 1) Logon to your student portal with your DEC username and password.
- 2) Go to Oliver Library
- 3) Go to Orbit
- 4) Click on the tab eBooks.
- 5) Scroll through the eBooks to find the one you would like to read or search for one.
- 6) Click on the title of the eBook you want to read.
- 7) Click OPEN to read your book.
- 8) Your eBook will open in a new tab. Click on the far-right side of the book to turn the pages forward, and on the left far side to turn pages back.

Returning eBooks

- 1) After reading the eBook close the tab.
- 2) Go to My Library.
- 3) Go to LOANS.
- 4) Click RETURN.

Students can see Mrs Pogalva if you have any further questions.

Happy reading!

Mrs Pogalva

Teacher librarian



SkoolBag

Stay up to date!
Download our FREE School App

2022 Classes

Principal	Jann Price
Assistant Principal Early Stage 1	Ms Rothwell
Relieving Assistant Principal Stage 1 (Mon, Tue)	Mr Polychroni
Relieving Assistant Principal Stage 1 (Wed, Thu, Fri)	
Assistant Principal Stage 2	Mrs Zreika
Assistant Principal Stage 3	Mrs Alki
Assistant Principal Learning and Support (LaST)	Mrs Mangraviti
Assistant Principal, Curriculum and Instruction	Mrs KC
K Kangaroo	Ms Edwards
K Bandicoot	Miss Rothwell
K Flying Fox	Mrs Vavitsas
1 Cockatoo	Miss Kassianou
1 Echidna	Mrs Ward
1 Lizard	Mrs Houdalakis
1 Possum	Ms Cooper/ Mrs Hamdan
2 Crocodile	Mrs Zreika / Mr Polychroni
2 Kookaburra	Ms Tsoukalas / Mrs Andika
2 Lorikeet	Mr Hines
3 Galah	Mrs Nishat
3 Magpie	Miss Georgopoulos
3 Owl	Mrs Alkiviadou
4 Emu	Mrs Shammi
4 Wallaby	Mrs Siddiqui
4 Wombat	Mr Giovas
5 Frog	Mrs Brennan
5 Python	Mrs Begum
6 Goanna	Miss Ismail
6 Koala	Mrs Mangraviti
English as an Additional Language or Dialect (EAL/D)	Miss Osseili
Teacher Librarian	Ms Kergis Mrs Ghiannakakis Mrs Tsilimos
Learning and Support Teachers	Mrs Pogalva
Community Language (Arabic)	Mrs Martins Mrs Levack Mrs Houtris
Office Staff School Administration Manager (SAM)	Mr Sislian
School Administration Officer (SAO)	Mrs Sergeant
Student Learning and Support Officer (SLSO)	Miss Ria Miss Sue Miss Rita
General Assistant	Miss Christina Miss Marjia Miss Michelle Miss Nancy Miss Aasiya
School Counsellor	Mr Mark
	Ms Foley (Tue, Wed) Ms Grace (Thursday in odd weeks)

School as Community Centre News

Welcome back everyone! So nice to see all the happy faces returning to school. We hope you had some fun times together over the summer – despite the Covid situation. Lovely to see most of the Kindy children so excited to be starting school.

Unfortunately, we have not been able to start programs at the Centre yet, but it looks like we will be able to start next month – I am so looking forward to that!

Enrolling now!

Step into Work Mondays 9.30-12.00. Starts 7th March for 5 weeks. If you are ready to think about working then this supportive course for women could be for you. Goal setting and detailed help with resumes, application letters and interview skills are included. This program is very helpful for those with overseas qualifications who haven't worked in Australia or anyone looking to find work. Please see or call Wendi as some details are required before you enrol. Tel: 9759 4061.

Play and Learn Playgroup Tuesdays 9.15 – 11.30. Starts 1st March This popular playgroup is for children aged 2 to 5 years. Support your children's language development & social skills and help them get ready for school as well. This year we are welcoming back Remonda as our Early Childhood Educator and Rojalin as the Family Support Worker. You will need to book in as LIMITED NUMBERS means you may not be able to attend every week. I will update you as to how in the next newsletter.

My Time Tuesdays 12.30-2.30. Online but restarting face to face on 1st March This group is for parents or others who are caring for children with a disability. It is a friendly group – the aim is to support you, give you a break and the opportunity to share with others in a similar situation. Child support provided. Come and talk to Rojalin on Tuesdays to find out more.

The Centre has some new couches! So, if you or anyone you know would like the old ones they are FREE to whoever can collect them.

All the information about community programs are posted on our Facebook page. Go to <https://www.facebook.com/LakembaSaCC/>



Ring Wendi on 9759 4061 for more information about any programs.

School Community Charter

 **Collaborative. Respectful. Communication.**

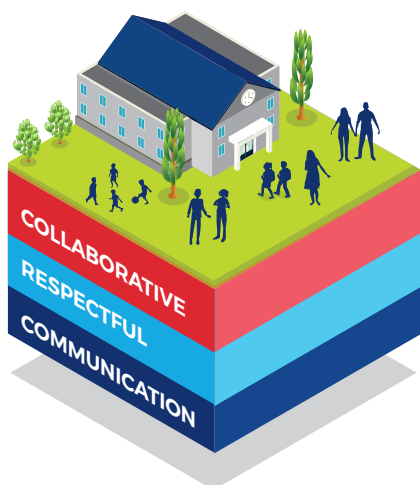
The following School Community Charter outlines the responsibilities of parents, carers, educators and school staff in NSW public schools to ensure our learning environments are collaborative, supportive and cohesive.

What our schools provide

NSW public schools work to create positive environments for students, staff and the entire school community that support student learning. We strive to ensure that every student is known, valued and cared for.

The best education happens when parents and schools work together.

The School Community Charter aligns with the NSW Department of Education Strategic Plan 2018 – 2022.



Positive environments

It is important that our NSW public schools are positive environments and that parents and carers are kept informed of students' progress and school announcements.

Parents and carers can expect:

- To be welcomed into our schools to work in partnership to promote student learning.
- Communication from school staff will be timely, polite and informative.
- Professional relationships with school staff are based on transparency, honesty and mutual respect.
- To be treated fairly. Tolerance and understanding are promoted as we respect diversity.

We treat each other with **respect**

We **prioritise** the wellbeing of all students and staff

Unsafe behaviour is not acceptable in our schools

We work **together** with the school

Ensuring respectful learning environments for all members of NSW Public Schools communities.



We create
collaborative
learning
environments

We
all play
our part

We work
in partnership
to promote
student
learning

Communicating with our schools

Our staff will find a time to talk to you when they can give you their full attention. Please remember that while our staff are in class or dealing with other matters, they may not be available to answer your questions immediately.

Our schools and communities will make sure that written communication is appropriate, fair and easy to read. We encourage you to use email and social media appropriately to connect with your school and stay up-to-date with up-coming events in the school community.

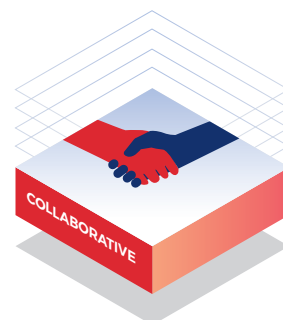
Our guide for parents, carers and students provides useful information about the complaints process:

education.nsw.gov.au/about-us/rights-and-accountability/complaints-compliments-and-suggestions/guide-for-parents-carers-and-students

Respectful communication is a right

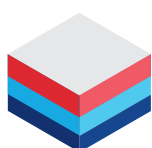
In all workplaces people have the right to feel respected. Unacceptable and offensive behaviour has no place in our school communities.

To ensure the wellbeing of students, staff and the community in our schools, steps will be taken to address unacceptable behaviour. This may include restricting contact with the school community or, in more serious cases, referral to NSW Police.



Unacceptable behaviour may include but is not limited to:

- Aggressive or intimidating actions, such as violence, threatening gestures or physical proximity.
- Aggressive or intimidating language, including the use of obscenities, making sexist, racist or derogatory comments or using a rude tone.
- Treating members of the school community differently due to aspects such as their religion or disability.
- Inappropriate and time wasting communication.



Collaborative.
Respectful.
Communication.

School Community Charter

education.nsw.gov.au