



Alice Street South, Wiley Park 2195

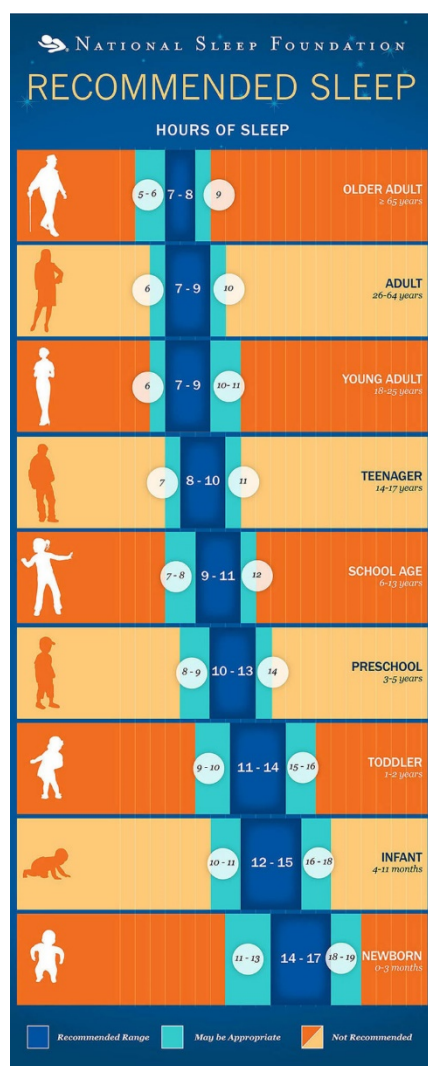
P: 02 9759 2915 E: lakemba-p.school@det.nsw.edu.au

Dear Parents and Carers,

I hope you are all managing to stay as dry as possible in this unusually wet weather.

Thank you to all the parents who attended their child's Meet the Teacher meeting on Zoom over the last few weeks. It is great to know that so many of our families are keen partners with us in their child's learning.

In conversation with students since returning to school this year I have noticed that many of them are going to bed late. Everyone needs rest and sleep to recuperate and be healthy. Below is a chart that indicates recommended sleep times for children and young adults.



Many children at our school stay up late watching TV or playing electronic games. Without the appropriate amount of rest and sleep they are not in the best position to be able to concentrate and learn.

We all want our children to be successful. I know many children do not like to go to bed but a regular bedtime and at least an hour without electronic screens before bed is very important for their development. This will be hard for parents to enforce in the beginning, but we need to do this to give our children the best opportunity to succeed and thrive.

<https://www.sleepmattersperth.com.au/how-much-sleep-do-i-need-how-much-sleep-does-my-child-need/>

Please see the following pages for the changes that will take place for parents being on site from Monday 7 March.

Kind regards,

Jann Price

### Important Dates

Friday 11 <sup>th</sup> March	SRC and Sport Captains and Vice Captain Induction Assemblies
Friday 18 <sup>th</sup> March	HIGH SCHOOL FORMS due to Lakemba Public School
Thursday 24 <sup>th</sup> March	School Photos POSTPONED UNTIL TERM 4
Wednesday 30 <sup>th</sup> March	Wellbeing Conversations
Friday 8 <sup>th</sup> April	Last Day of Term 1
Wednesday 27 <sup>th</sup> April	First Day of Term 2 for Students

### SRC and Sport Captain and Vice-Captain Induction Assemblies

Parents of students who have been elected as a Student Representative Council (SRC) representatives by their class and Sport Captain and Vice Captains elected by their Sport House are invited to attend a short assembly next Friday 11<sup>th</sup> March to induct them and present them with their badge.

The assemblies are as follows:

Early Stage 1 and Stage 1 (K – 2) – 9.30am

Stage 2 and 3 – 10am

Sport Captains and Vice Captains – 10am

Students who are receiving badges will bring home a parent invitation.

### COVID Restrictions

As announced in the media last week there are important changes to the rules regarding COVID restrictions in Primary Schools from Monday 7<sup>th</sup> March.

From Monday:

- Mask wearing is not mandatory for staff or visitors on site. Staff and visitors can still wear masks if they wish.
- Parents are permitted on site as long as they behave in a COVID smart way. This includes social distancing.
- Visitors should still use the QR code to check in when they are on site for meetings, assemblies and longer visits. They do not need to QR code when they are dropping off and picking up their children.
- On site visitors do not need to be double vaccinated or show proof of vaccination to come on site. All staff and volunteers on site must be fully vaccinated.

From Monday 7<sup>th</sup> March parents will be permitted on site in the morning. We ask that you stand to the sides of the the Square and do not mix with the students. We also ask

that you leave the school ground as soon as possible. This is to keep everyone in our community as safe as possible.

From Monday 7 March



The school gate will open at 2.55pm for parents and carers.

Students will be dismissed at 3pm.

### Attendance

Being at school every day is absolutely necessary for children to have the best opportunity for learning and academic progress. It is also very important for social wellbeing.

Every child should be at school every day unless they are sick. Students who are sick for more than a day should visit the doctor and return to school with a medical certificate that explains their absence.

The infographic below explains how much time students lose in their learning when they are absent for one day every fortnight.



While we understand that getting to school during wet weather can be difficult staying at home because of wet weather is not a justified reason for not coming to school. Every child should be at school every day unless they are sick.

### Meet the Teacher

Thank you to the parents who attended the Meet the Teacher Zoom sessions for their children over the last couple of weeks. It is important that every parent knows and understands the expectations and routines of their children's class.

Next week a copy of the presentation will be emailed to families.

### Police Youth Liaison Officer (PYLO) Visit

Last week Senior Constable Marinello attended the school and spoke to Stage 2 and 3 students about respectful relationships and how to engage with their parents, teachers and friends respectfully.



While she was here Constable Marinello provided information about road safety and driving around schools. Please take note of the information at the end of this newsletter.

Senior Constable Marinello and the NSW Police Force are great supporters of our school community.



Thank you to the parents who attended the High School 2023 Zoom session on Monday afternoon. Thanks also to Mrs Mangraviti and Ms Osselli for preparing the session and sharing valuable information and insights in to the process of applying for High School.

All Year 6 students have been given their application to enrol in a NSW Government High School in 2022. These forms must be returned to Lakemba Public School by Friday March 18<sup>th</sup> at the latest.

Please remember that many High Schools have a limited number of places for out of area enrolments – that is students and families who do not live in the school intake area. You can find your local High School using this link <https://schoolfinder.education.nsw.gov.au/>

### Absence Notes

Thank you to our families who make sure they send a note explaining their child's absence from school. All students who have been absent from school must bring a note from their parent or carer explaining their absence on the day their return to school. Students who do not bring a note with them remain in the office area until a note explaining this absence is provided by their parent or carer. If you forget to send the note with your child you can email it to the school on [lakemba-p.school@det.nsw.edu.au](mailto:lakemba-p.school@det.nsw.edu.au).

### Emergency Contacts

Please make sure that you have checked that the Emergency Contact information you provided when your child enrolled at Lakemba is still current. When children are sick we must be able to contact you or your emergency contacts quickly.

### Voluntary School Contribution

This week you will receive a note about the annual voluntary school contribution. Every year we ask families to

make a small contribution to assist us to provide resources for your children. As we have done for the last three years we are asking parents to contribute:

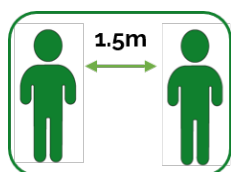
- \$35 per student or
- \$70 per family.

Your contribution will be used to purchase resources to enable your children to have access to items to help them in their learning. This year we will use the contributions to increase our Take Home and Guided Reading resources.

### Lost Property

The Lost Property container is overflowing with jackets and hats that have been left around the school by students. Unfortunately most of the items do not have names on them so they cannot be returned to the people that own them.

Please make sure all your child's property is clearly marked with their name and class.



**It is important for parents to maintain social distance while they are dropping off or picking up their children.**

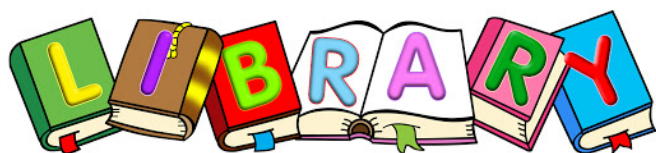
Our students have begun the new school year looking beautiful in their uniforms. A reminder that shoes should be basically black and that hijabs should be white or royal blue. Hijabs should also be close fitting and not flowing as they can be dangerous on the playground when the students are playing.

All items of student clothing must be labelled with the student's name so they can be returned if they are misplaced.

The school has a small number of clean, used jackets and jumpers of various sizes. Please see the office if you require a jacket or jumper.

### What's New at Lakemba Public School?

Earlier this week two Water Bottle Filling Stations were installed in the school. There is one near the bubblers in the Square and one near the bubblers in Area A. These stations make it easier for students to fill their water bottles during the day. Two people can use the stations at the same time.



### Premier's Reading Challenge 2022

This week marks the official commencement of the Premier's Reading Challenge (PRC).

For many years, students at Lakemba Public School have been encouraged to participate in the Premier's Reading Challenge. The PRC is voluntary, not compulsory. It contributes to each student's enjoyment of reading and exposes them to a wider variety of books. We are proud of our 365 students who completed this challenge in 2021.

If you are still not sure what the PRC actually is, visit <https://online.det.nsw.edu.au/prc/home.html>

Early Stage 1, Stage 1 teachers and I will be reading PRC books with K-2 students during their weekly visits to the library. We will be entering the reading records online for Kindergarten and Stage 1 classes only and this will be done over the coming months.

Students (along with their Parents and Carers) in Years 3-6 who wish to participate are responsible for entering their own books online. This needs to be completed by the 19<sup>th</sup> August, the date the PRC closes to everyone.

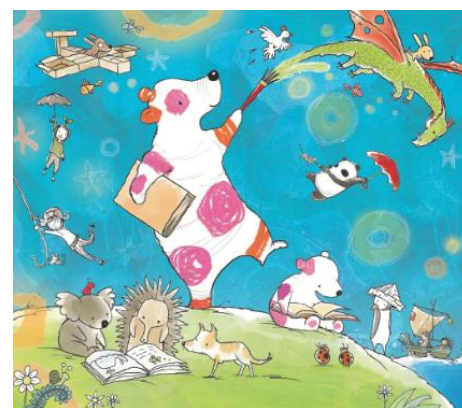
No computer at home? No problem! Students are welcome to add to their reading records when the library is open at lunchtimes.

Personal reading logs can be printed from the website and copies are available from the library. A reading log is simply a hard copy of the books that the student has read. They may choose to keep the list going during the year and add the books online at any time before 19 August 2022.

Each student's PRC login is the same username/password that they use when logging into any computers at school. As it's still only early in the year, many students may not yet know their login details. If they are unsure of their login, they will need to speak to their teacher or see me.

Last year we had 77% of Primary School students complete the challenge. Let's see if we can improve on that achievement. Happy reading!

Mrs Pogalva  
Teacher Librarian



NSW Department of Education

## 2022 NSW Premier's Reading Challenge

Start reading now!

Key dates for students in K-10:  
Challenge opens Monday 28 February  
Challenge closes for student entries Friday 19 August

www.premiersreadingchallenge.nsw.edu.au



## School as Community Centre News

What a wet and soggy week or two it has been! Some parents have enquired and YES all our advertised groups are on whether it is raining or not!! So, if you have an umbrella or raincoat please still come to the groups.

LAST Chance! **Step into Work Mondays 9.30-12.00. Starts 7<sup>th</sup> March for 5 weeks.** If you are ready to think about working then this supportive course for women could be for you. Goal setting and detailed help with resumes, application letters and interview skills are included. This program is very helpful for those with overseas qualifications who haven't worked in Australia or anyone looking to find work. Please see or call Wendi as some details are required before you enrol. Tel: 9759 4061.

**Play and Learn Playgroup Tuesdays 9.15 – 11.30. Now face to face.** This popular playgroup is for children aged 2 to 5 years. Support your children's language development & social skills and help them get ready for school as well. This year we are welcoming back Remonda as our Early Childhood Educator and Rojalin as the Family Support Worker. At the moment we are taking new families who live locally so if you haven't tried playgroup before and your child is over two years then come along. Please wear a mask and bring a small fruit snack for your child's morning tea.

**Baby and Toddler Playtime Thursdays 10.00-11.30. Starts March 10<sup>th</sup>.** If you have a baby or a child under two years of age then this small group for the little ones might be fun to try. It will include speech and language support provided by students from Sydney University.

**Playgroup Leadership Course Wednesdays 9.30-12.30.** We still have some places available in this course. TAFE is running the program to train parents in skills to organise and run a playgroup for your community. Children welcome. Enquire with Wendi now to check eligibility.

**My Time Tuesdays 12.30-2.30. Now face to face.** This group is for parents or others who are caring for children with a disability. It is a friendly group – the aim is to support you, give you a break and the opportunity to share with others in a similar situation. Child support provided. Come and talk to Rojalin on Tuesdays to find out more.

All the information about community programs are posted on our Facebook page. Go to <https://www.facebook.com/LakembaSaCC/>



**Ring Wendi on 9759 4061 for more information about any programs.**

# DRIVING OFFENCES IN SCHOOL ZONES

With your help, a safer community.

## Disobey 'No Parking' Sign



Fine =  
**\$196\***  
& Lose 2 Points

### 'KISS & DROP' ZONE

ONLY stop to drop off or pick up  
Stay within **3 metres** of your car  
Stay less than **2 minutes**



Section 168 Road Rules 2014

## Disobey 'No Stopping' Sign



Fine =  
**\$352\***  
& Lose 2 Points

**DO NOT STOP**  
for **ANY** reason



Section 167 Road Rules 2014

## Child or Passenger Not Restrained

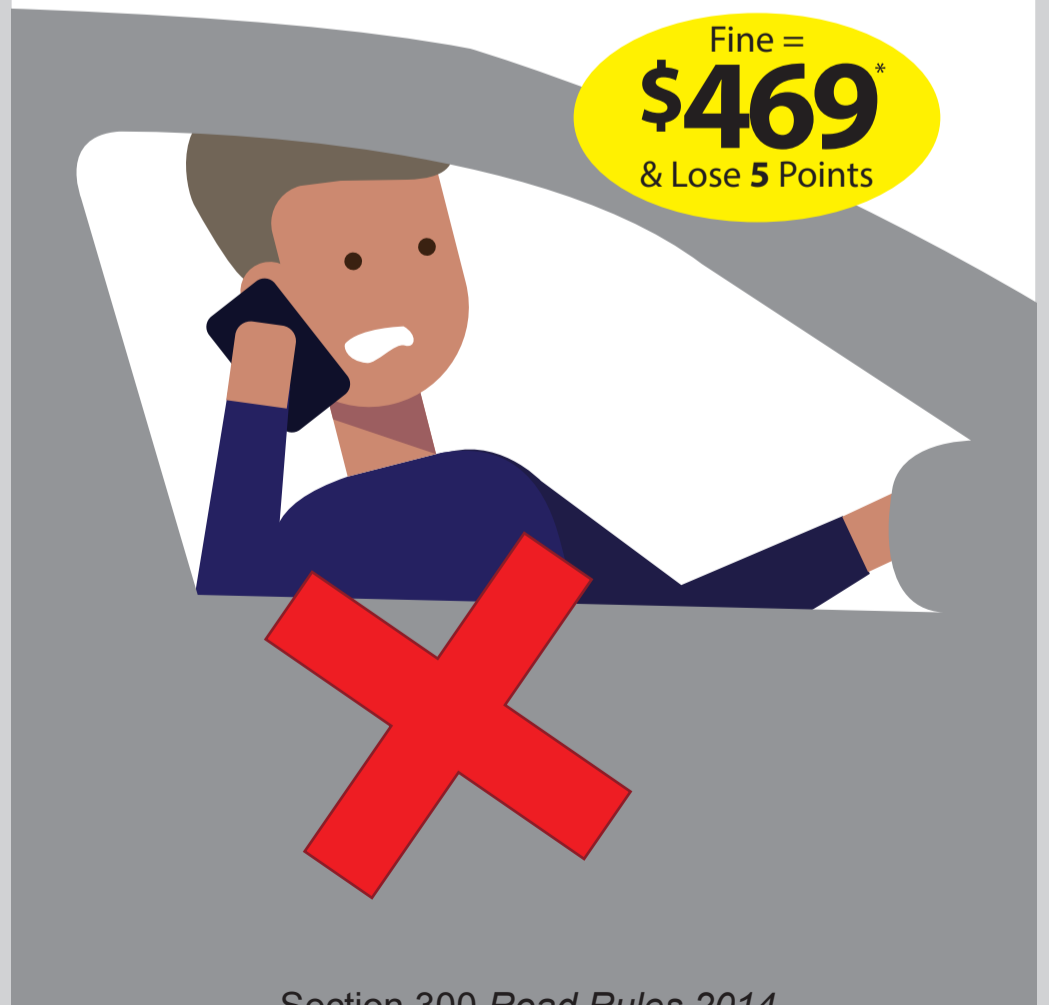
Fine =  
**\$352\***  
& Lose 3 Points



Sections 265, 266, 267 Road Rules 2014

## Driver Uses Mobile Phone When Not Allowed by Law

Fine =  
**\$469\***  
& Lose 5 Points



Section 300 Road Rules 2014



NSW Police Force

With your help, a safer community.

## Disobey 'No Parking' Sign



- ONLY stop to drop off or pick up
- Stay within **3 metres** of your car
- Stay less than **2 minutes**

Fine = **\$196**  
& Lose 2 Points

Section 168 Road Rules 2014

## 'KISS & DROP' ZONE



# DRIVING OFFENCES IN SCHOOL ZONES



Fine = **\$352**  
& Lose 2 Points

**DO NOT STOP**  
for **ANY** reason

Section 167 Road Rules 2014

Fine = **\$469**  
& Lose 5 Points

**Driver Uses Mobile Phone**  
When Not Allowed by Law

**DO NOT** talk, text or view  
your phone while driving.

Section 300 Road Rules 2014

Fine = **\$352**  
& Lose 3 Points

**Child or Passenger**  
Not Restrained  
(Not wearing a seat belt  
or not in a child seat)

Sections 265, 266, 267  
Road Rules 2014

For more information see: **Road Rules 2014**

<http://www.rms.nsw.gov.au/roads/safety-rules/road-rules/index.html>

\*Fines are current as of February 2022. Fine amounts change regularly.

For up-to-date fine amounts see: <http://www.rms.nsw.gov.au/roads/safety-rules/demerits-offences/index.html>